



The Logical Choice...

Even for the Ladies

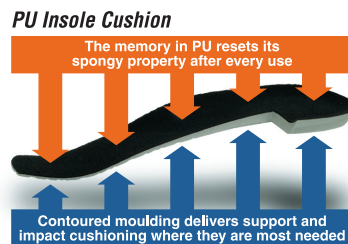
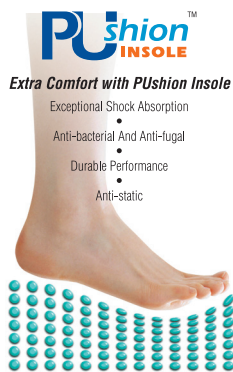
Model 200 | *Ordering codes*
 KL200X Safety, Elastic Slip-on Shoe, Black Grain Leather
 KL200Z Non-Safety, Elastic Slip-on Shoe, Black Grain Leather (Workshoe)



Model 300 | *Ordering codes*
 KL300X Safety, Lace-up Shoe, Black Grain Leather
 KL300Z Non-Safety, Lace-up Shoe, Black Grain Leather (Workshoe)



King's, contemporary styling, ladies shoes come to you with full length contoured PU insole cushion, non-woven breathable lining and single density polyurethane sole for unrivalled comfort plus all the safety features.



Shoe Size Scale Comparison

UK	2	3	4	5	6	7	8
French	34	35	36	37	38	39	40

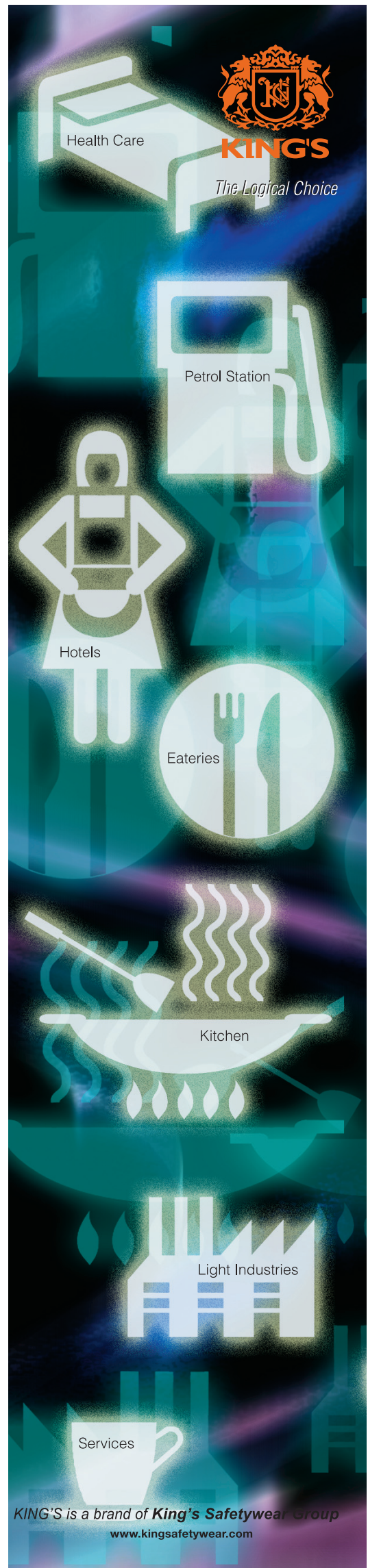


Safety Features

- Sole resistant to oil and acids/alkalis
- Extra light, slip resistant polyurethane sole
- Antistatic
- Carbon steel toecap that meets the impact resistance of 200 joules (Optional - Available as workshoe)

Distributor

www.kingsafetywear.com



KING'S is a brand of King's Safetywear Group
www.kingsafetywear.com

210x297mm

Precolor Separation & Print File, Ltd. will make every effort to carry out instructions to customer's satisfaction. However, we accept no responsibility or liability for any error which is not noted on the proof. Customers are urged to check the proof thoroughly before authorising print runs.

JOB NO : 0611/11
 DATE : 04.05.2011
 DATE : 09.05.2011

SCREEN : 175
 MAC : SUE
 TEL : 6295 1311
 MAC : JGZ

